

Before you Begin ...

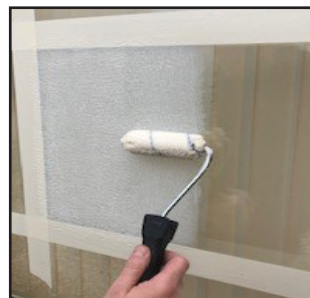
- 1. Test Area & Test Peel** - You must always apply the Protectapeel product to a small area to test the substrate's suitability. You must ensure that all substrates are covered. Allow the product to dry for 48 hours, and then check that the Protectapeel product will peel away from each substrate.
- 2. Masking** - Mask all areas that you don't intend to coat in Protectapeel with a suitable tape. Rubber window gaskets can be protected with Petroleum Jelly prior to the application of Protectapeel. Always remove the tape once the Protectapeel product has been applied and is still wet.
- 3. Weather** - Protectapeel products cannot be applied if the temperature is below freezing or in rainfall. If the surface is likely to be exposed to direct rainfall before the Protectapeel product has dried do not apply.
- 4. Protect from Rainfall-** If Protectapeel Glasstrip Original or Super UV is exposed to direct rainfall apply Protectapeel 1090 Top Coat on top of the peelable coating. When used on buildings / windows it is always best to fit gutters to prevent a "water falling" effect on the sides of the building.
- 5. Wet Film Thickness** - Ensure you have a wet film gauge and know what the minimum required wet film thickness (WFT) is of the Protectapeel product before you start to apply. You can find the minimum WFT on the product's Technical Data Sheet.
- 6. Glass Contamination** - If there is a likelihood that the glass is contaminated with Poly Methyl Methacrylate (acrylic) do not use Protectapeel Glasstrip Advanced. Use Protectapeel Glasstrip Original or Protectapeel Super UV instead.

Application by Roller

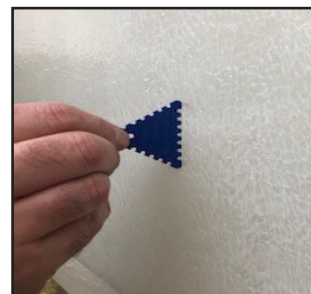
Stir Product Before Use

We recommend that you use a lambswool roller for application and ensure that you have followed the "Before you Begin Application" section.

1. Once you have masked off the area, apply a base coat of Protectapeel to the substrate paying particular attention to vulnerable areas such as corners and upstands. Allow to dry for 15mins until coating is tacky.



2. Apply a second, thicker coating, again paying particular attention to corners or upstands. If the coating is too thin in these areas it will be difficult to remove.

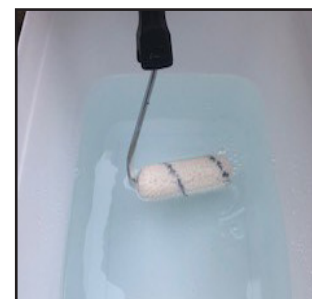


3. Use a wet film gauge to check the coatings wet film thickness; make sure this is the same minimum WFT as stated in the product's Technical data sheet (TDS).

4. Remove the masking tape whilst the Protectapeel product is still wet. This helps to achieve a good edge that is easier to peel when the product is no longer required.



5. Leave to dry in a rain free environment and check the products TDS for drying times. If the coating is damaged at a later date a new coating of the Protectapeel product can be applied to the damaged area. It will bond to itself providing the perfect repair.



6. After application rollers and any other equipment should be washed thoroughly in cold water.

7. When required Protectapeel is removed by hand peeling. Check the product's TDS for removal time guidelines. The coating can be condensed into a small ball and returned to Spraylat International for recycling in its original tub or disposed of as domestic waste.



For more information or guidance
call on 01536 408409 or
email enquiries@spraylat.co.uk

Application by Spray

Stir Product Before Use

We recommend that you use an airless spray gun with a 17 thou tip size and that you use a shield to protect against overspray on brick work or render. Ensure that you have followed the "Before you Begin Application" section.

1. You need to purge the spray equipment before you begin application. First place the inlet suction hose into the Protectapeel container and purge the airless spray pump with material. Then purge the airless spray gun and test the spray pattern.



2. Point the nozzle at the area you wish to protect and hold the spray gun 300- 400 mm from the substrate. Use the Protectapeel shield to prevent overspray.

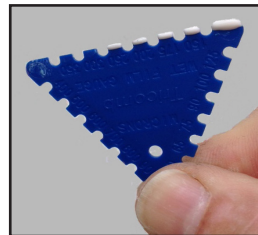
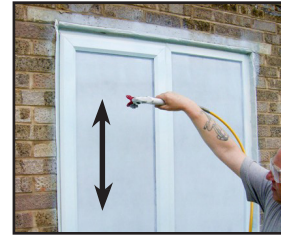


3. Release the safety catch and start spraying in a horizontal direction. Keep the gun at right angles to the surface. This means moving your entire arm back and forth rather than flexing the wrist.



4. Release the trigger at the end of each stroke. Then depress the trigger and overlap the previous pass by about 50%. Continue in this fashion for consistent coverage working down the substrate.

5. When the surface is fully covered repeat with the spray gun in a vertical direction in the same manner. Care should be taken to ensure that corners and upstands are coated thoroughly, if the coating is too thin in these areas it may become difficult to peel.



6. Use a wet film gauge to check the coatings wet film thickness; make sure this is the same minimum WFT as stated in the product's Technical data sheet (TDS). Remove any masking tape whilst the product is still wet.

7. Once spraying is complete clean the gun using cold water. Failure to clean the gun will result in serious problems such as blockages.

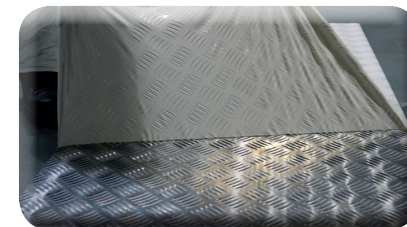
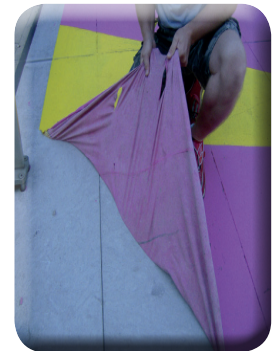


8. When required Protectapeel is removed by hand peeling. Check the product's TDS for removal time guidelines. The coating can be condensed into a small ball and returned to Spraylat International for recycling in its original tub or disposed of as domestic waste.

PROTECTAPEEL

PAINT • PROTECT • PEEL

Peelable Coating Manufacturer Since 1992.



Application Guide

By Roller & Spray

www.protectapeel.co.uk